

Server 2008

## Installation Requirements

ShoreWare servers require IIS, COM+, SMTP, and FTP. Other required tasks include changing the SMTP and FTP startup type to automatic.

The following sections describe the selections required at pivotal steps in the installation process. These steps must be completed as a prerequisite to installing or upgrading the ShoreWare components discussed in this section.

**NOTE: Windows Server 2008 must be activated through Microsoft before installing ShoreWare Server and Remote Server.**

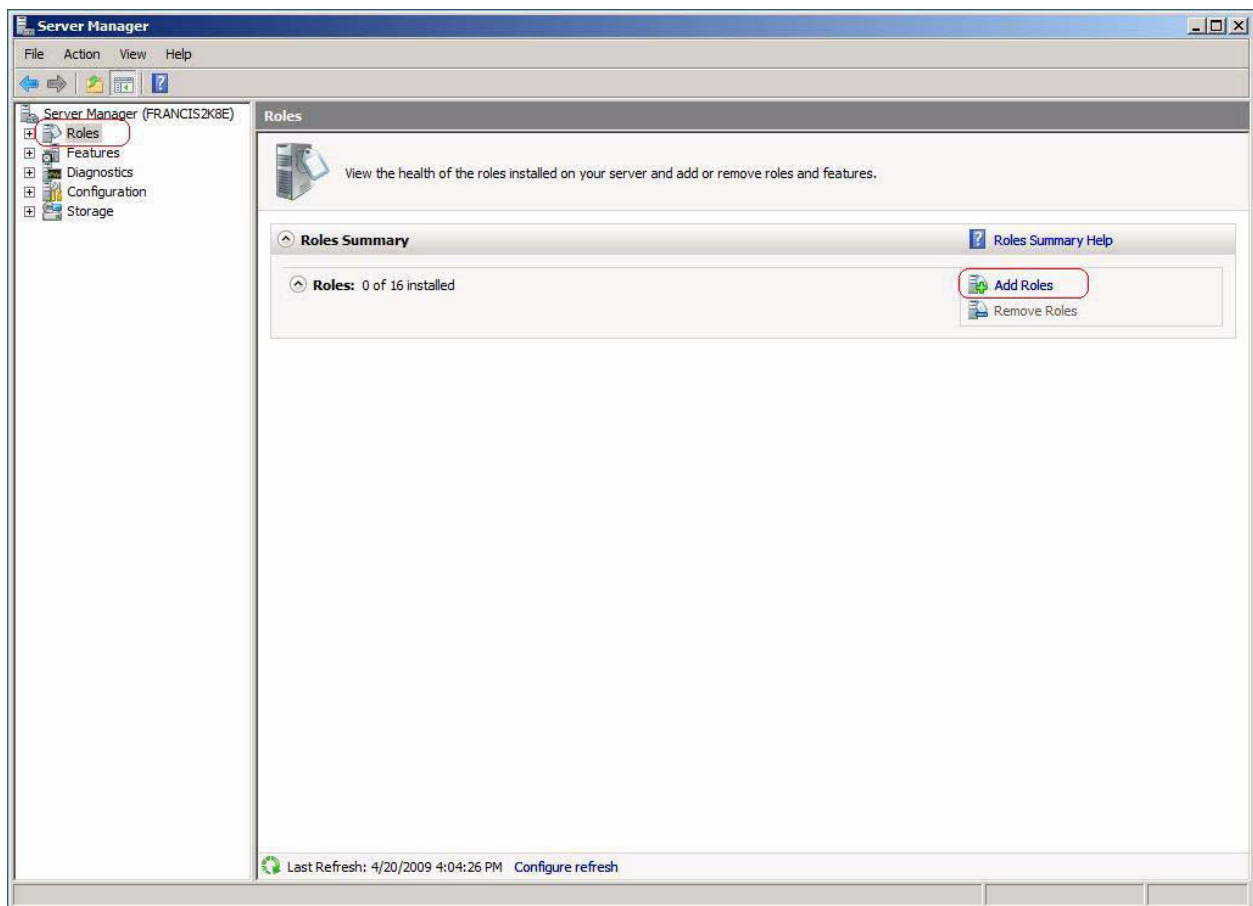
### Application Server Role

Figure 2 displays the required roles for the Application Server for ShoreTel. Selecting IIS and COM+ ensures the installation of these services.

**Step 1** Click the Server Manager icon on the Task bar or, select *Start -> Programs -> Administrative Tools -> Server Manager*.

**Step 2** In Server Manager right-click **Roles** and select **Add Roles** from the pop-up menu.

**Note:** You can also click the **Add Roles** icon on the right pane



**Figure 1** Installation Windows Role Services

**Step 3** In Add Roles Wizard, click **Server Roles** on the left pane

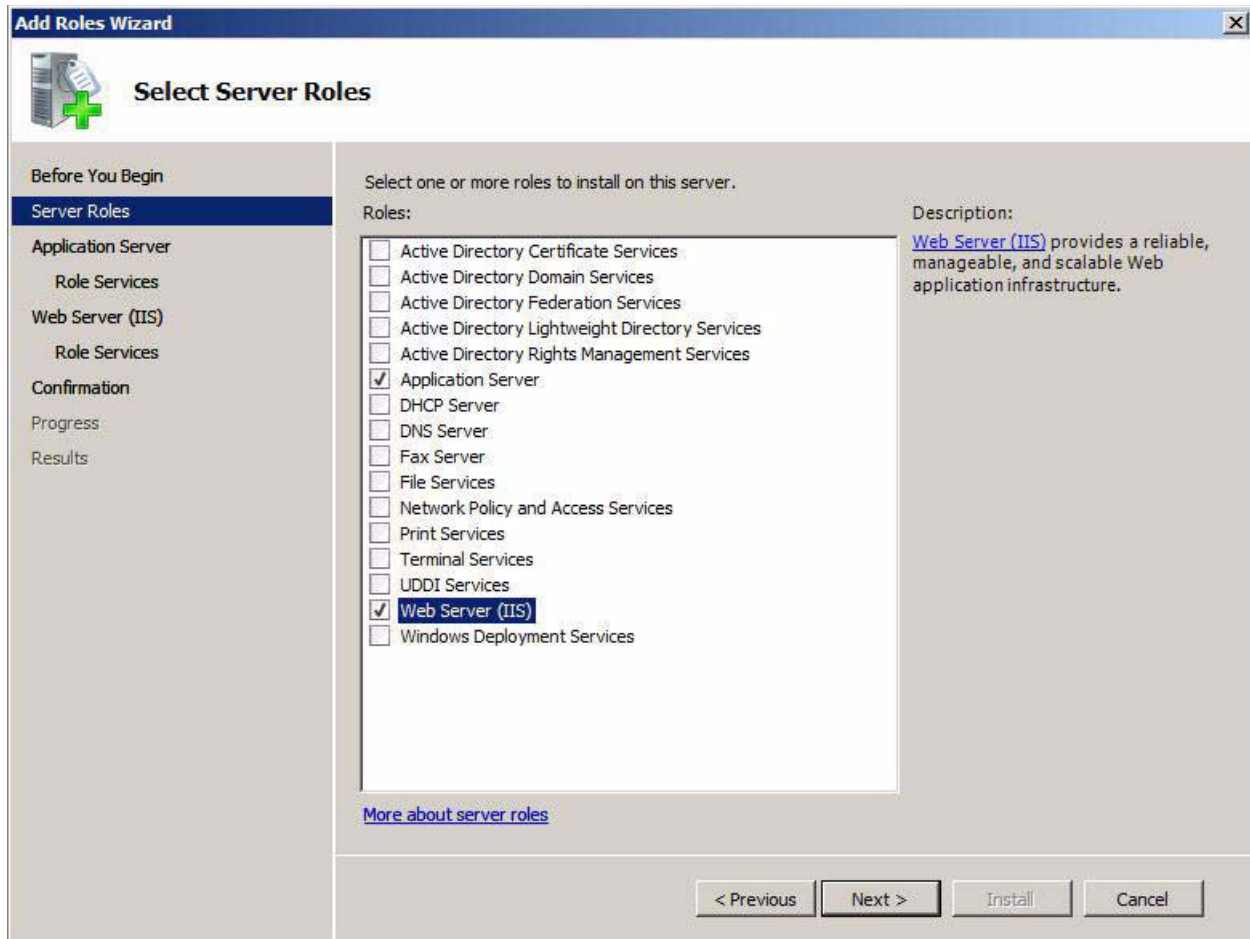
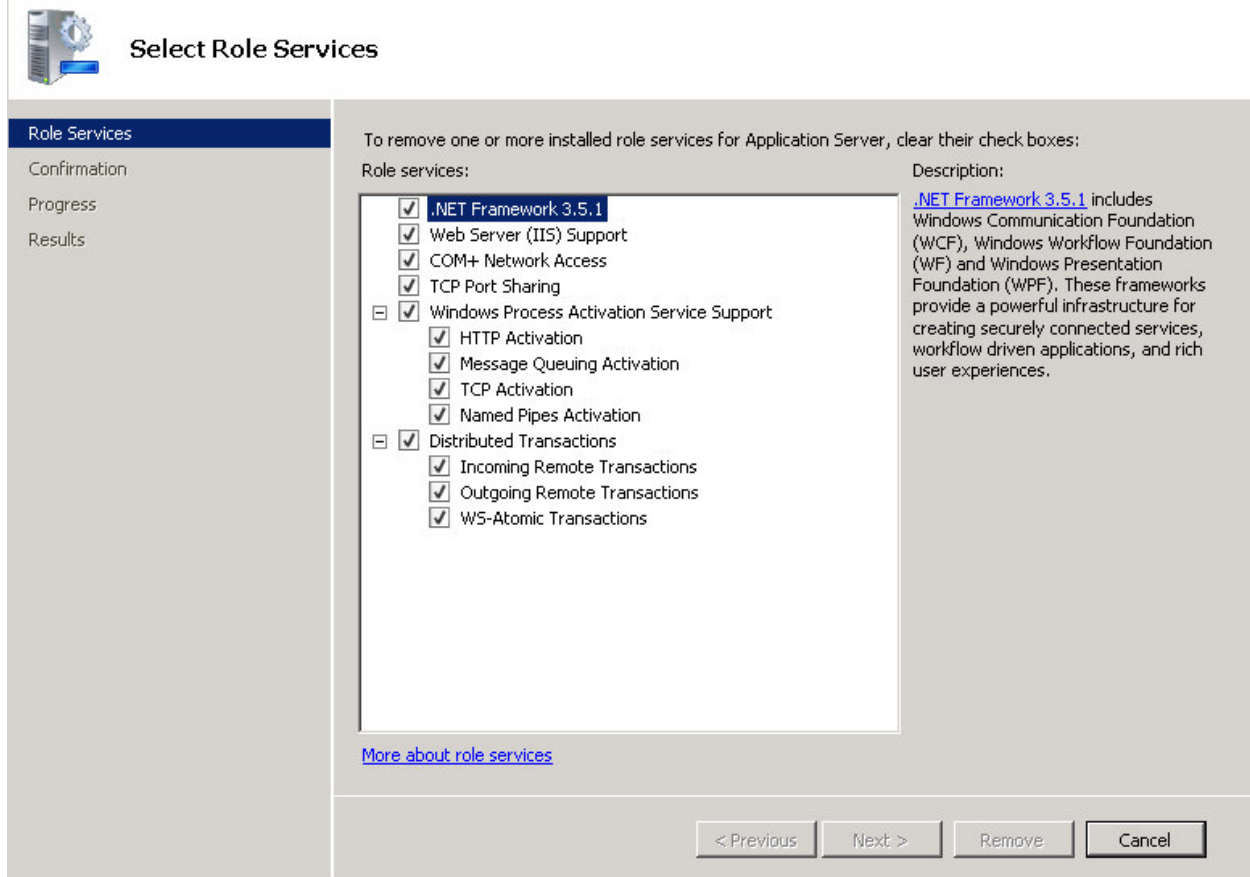


Figure 2 Required Server Roles

**Step 4** In the Roles pane, click **Application Server** and **Web Server (IIS)**.

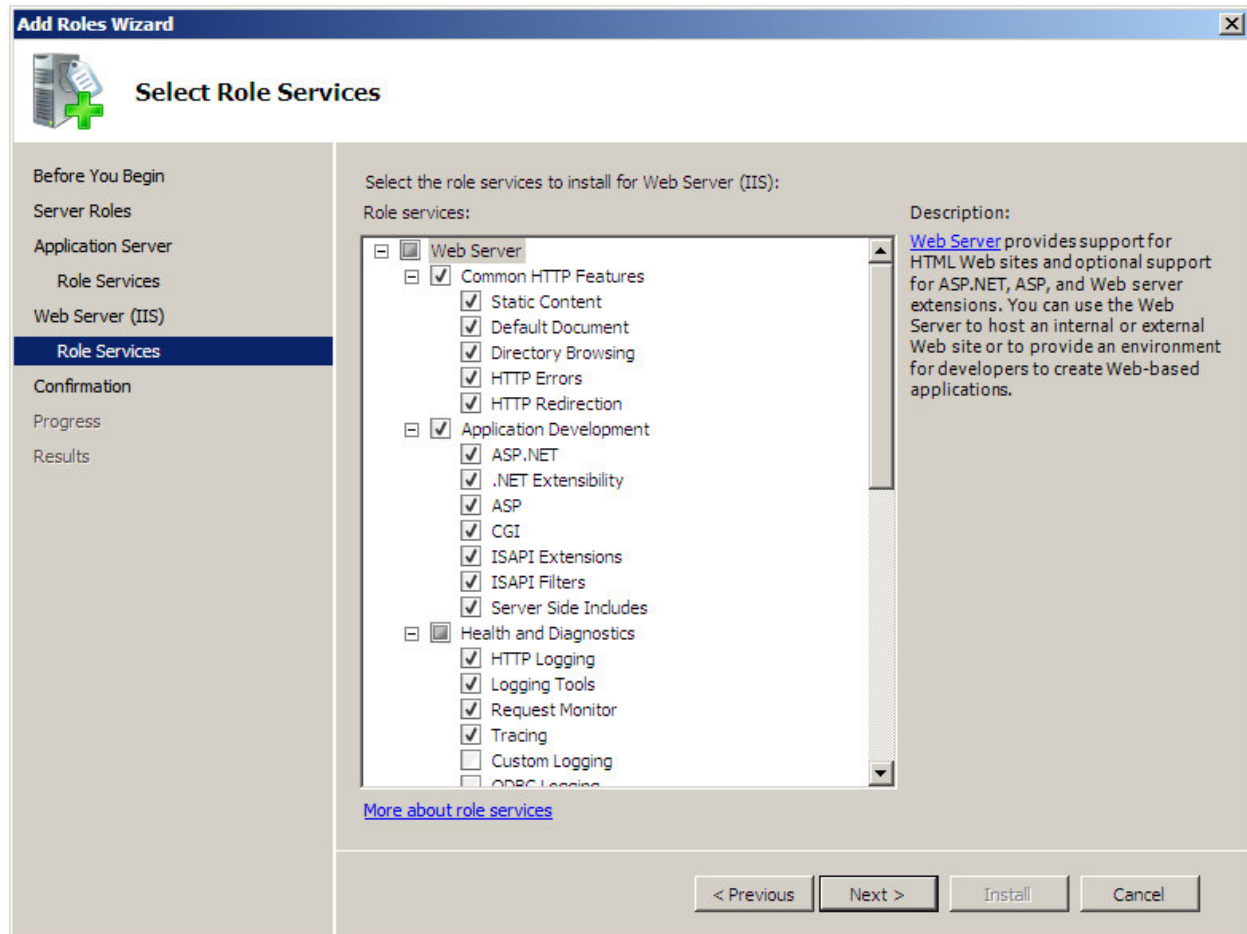


**Figure 3 Required Application Server Role Services**

**Step 1** Access the Server Manager

**Step 2** Click on Server->Add Role Services under Application Server

**Step 3** Sleet all Role service as noted in Figure 3



**Figure 4 Required Web Server Role Services**

**Step 1** Access the Server Manager

**Step 2** Click on Server->Add Role Services under Web Server (IIS)

#### **Web Server Role Services**

- Select all Common HTTP Features
- Select all Application Development Features
- Select the following Health and Diagnostics Features
  - HTTP Logging
  - Logging Tools
  - Request Monitor
  - Tracing
- Select all Security options
- Select all Performance options

**NOTE:** You may need to scroll down the Web Role Server window to see all the available options.

**Management Tools** – select all Management Tools options

**FTP Publishing Service** – select all FTP Publishing Service options

Microsoft Server Features

Figure 4 displays the Select Features Installation panel. ShoreWare requires the installation of the SMTP Server

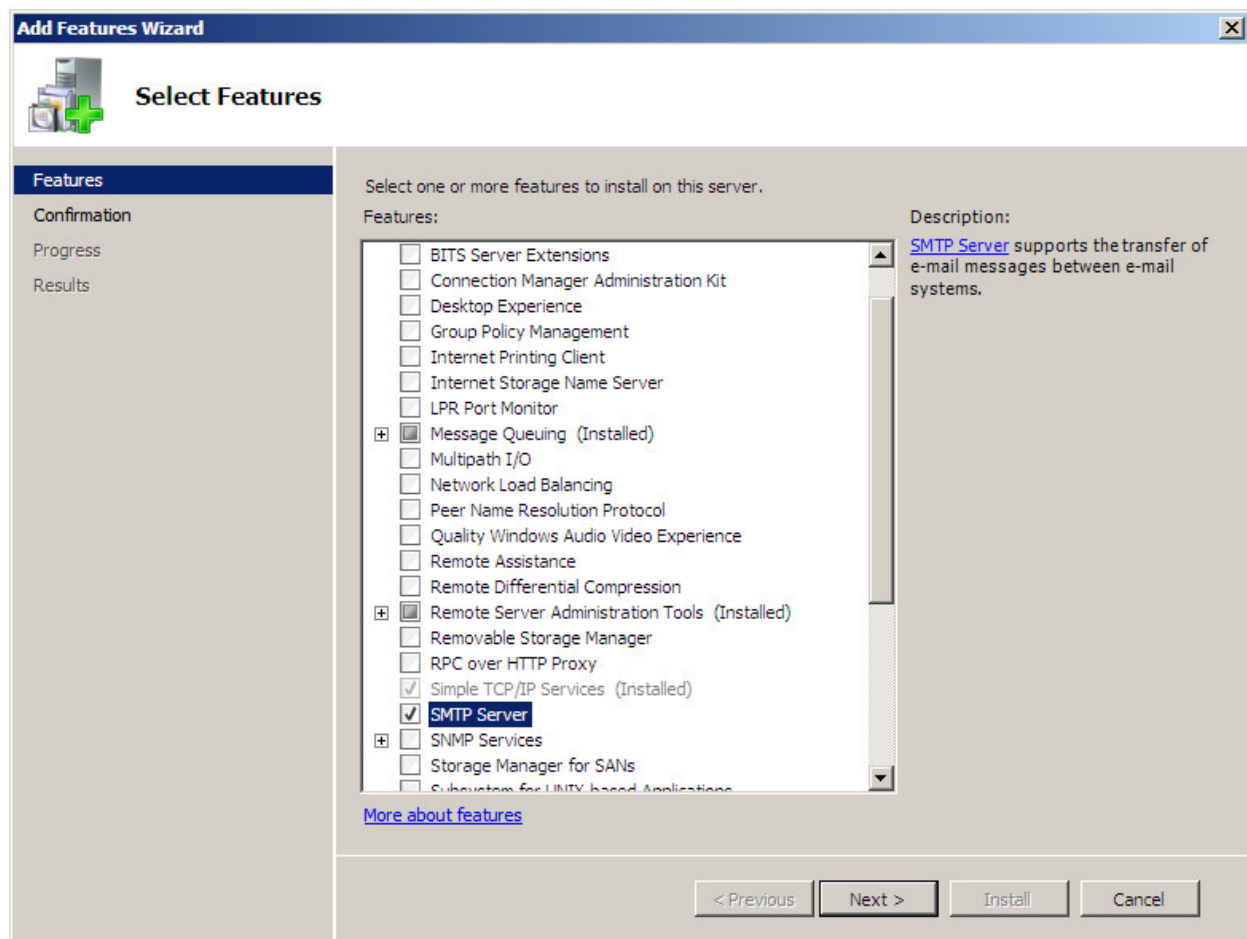


Figure 4 Selecting SMTP Server

Microsoft Server Feature Properties

After SMTP and FTP are installed, the startup type must be changed from manual to automatic. The following procedure changes the startup type for SMTP and FTP.

**NOTE:** Verify that the FTProot folder in the Inetpubs directory has at least read access.

**Step 1** Access the Services table by selecting *Server Manager -> Configuration -> Services*.

**Step 2** Open the Simple Mail Transfer Protocol (SMTP) Properties panel by right clicking *Simple Mail Transfer Protocol* and selecting **Properties** on the context menu.

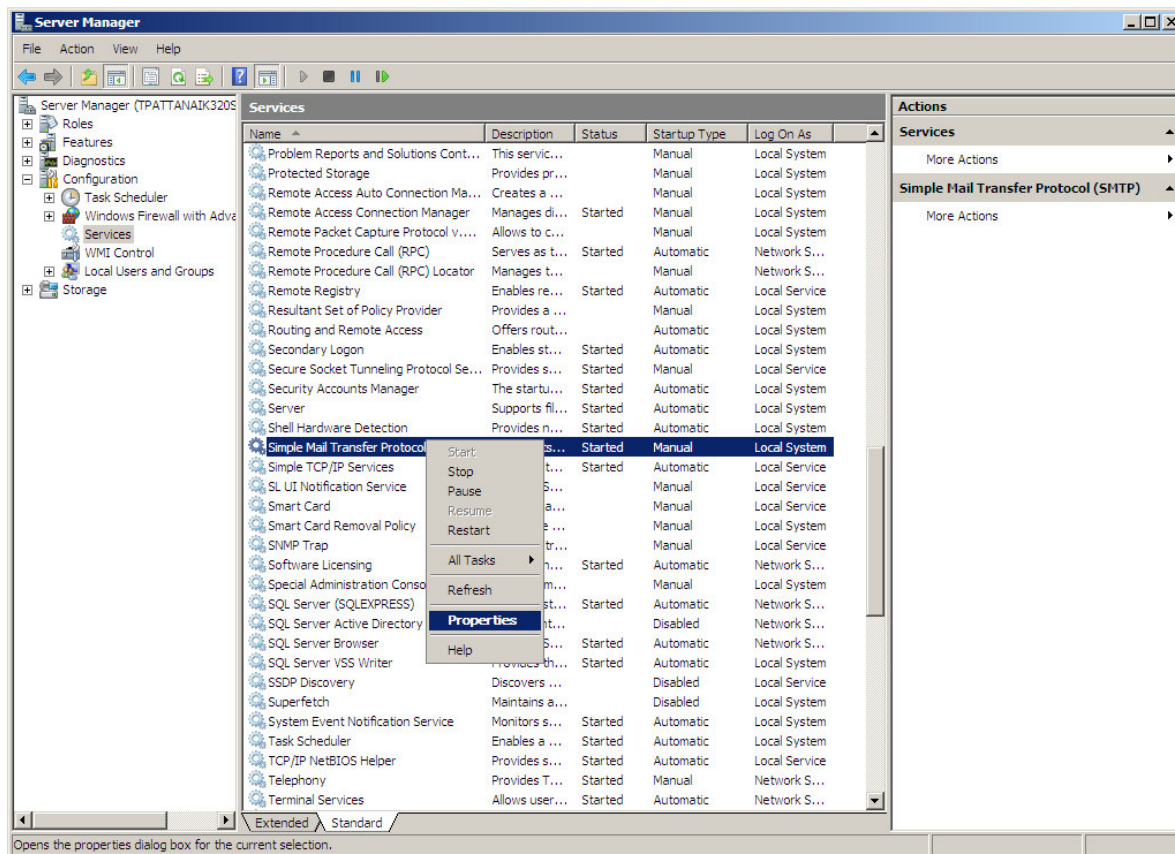
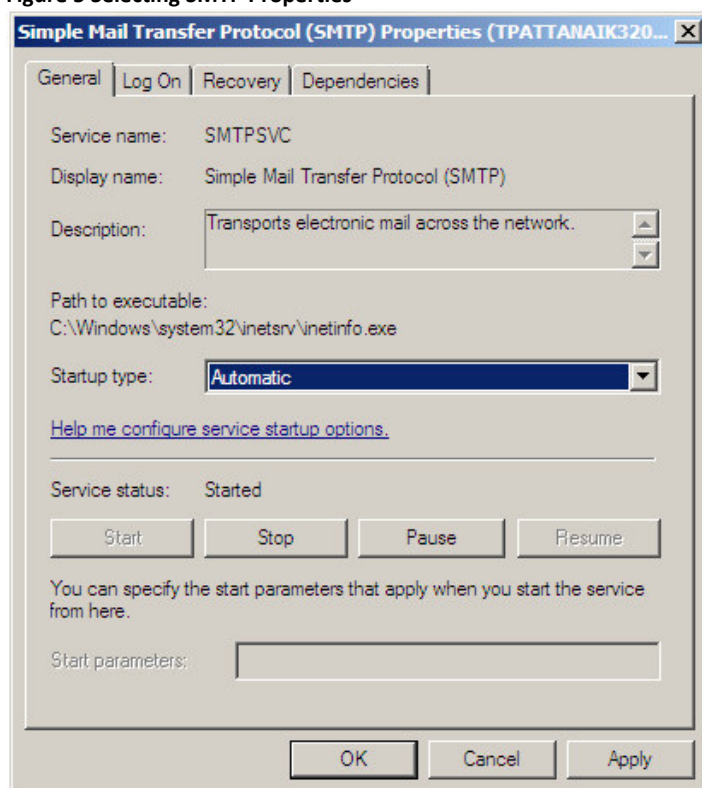


Figure 5 Selecting SMTP Properties



**Figure 6 SMTP Properties panel**

**Step 3** Select **Automatic** on the **Startup Type** drop down menu, then click the **OK** button.

**Step 4** Return to the Services table.

**Step 5** Open the **FTP Publishing Service** properties panel by right clicking **FTP Publishing** and selecting **Properties** on the context menu.

**Step 6** Select **Automatic** on the **Startup Type** drop down menu, then click the **OK** button.